



Newport Public Schools

Educational Success – Priority 5

Increase the number of youth participating in pre-employment opportunities in collaboration with the district and community based programs to gain exposure to the work world.

Newport Public Schools has many types of programs throughout the academic day, as well as afterschool and summer opportunities, aimed at increasing pre-employment exposure.

Opportunities available during the academic day.

1. *School to Career Initiatives at Rogers High School*
 - *In 2009-2010 , 102 students participated in volunteer, internship, job shadowing and paid employment opportunities.*
 - *Thus far in 2010-2011, 97 students have been placed in job or internship placements.*
 - *The community/business connections are widespread and represent the arts, recreation, food service, marine trades, banking, tourist, government, navy, and technology industries.*

Opportunities available during the academic day.

1. *School to Career Initiatives at Rogers High School - continued*
 - *Rogers High School is a member of the Newport County Co-op Mentor Program, with Portsmouth, Middletown, The Met School, and Tiverton High Schools.*
 - *This organization's membership include businesses and organizations that sponsor after school field trips, speakers panels, set up internships, for example, in website or computer game design or visits to Newport Hospital, all designed to provide youth with exposure to the world of work.*
 - *Partnership with two boatyards , New England Boatworks and Confident Captain, to place students in marine trade internships.*
2. *The Guidance Department at Rogers coordinates two career focused programs with the Naval Undersea Warfare Center: the summer Undersea Technology Apprentice Program and the "Bring a Future Engineer to Work Day" (April 14, 2011 this year). The entire AP Physics class will attend this event this year.*

Opportunities available during the academic day.

3. *Career Awareness during Advisory Period*
 - *The Out of the Box Series*
 - *Emphasis is beyond "traditional" careers. Using the seminar approach, they have held conversations with the focus on a major – English, world language, social studies, or health and physical education, or science – what kind of jobs can you get with this major. In science, for example, they focused in 3 areas: "green," medical, and research/laboratory.*
 - *Career Fair in the spring with schools, apprenticeship programs, technical programs represented.*
 - *Most recently, the Newport Harbor Corporation Job Fair April 13th*
4. *Field trips*
 - *Academy of Information Technology (AOIT) classes - Women in Engineering trip every year.*
 - *Newport Area Career and Technology Skills Competitions in all courses.*

Opportunities available during afterschool and summer programs through The Newport Community School (NCS).

1. Food Service Internship

- *NCS partnered with Rogers to offer 3 internships to students who were responsible for preparing summer lunches for students in the Academic Recovery and Rogers 101 programs.*

2. Life Saving Course

- *In partnership with the YMCA, NCS has operated a life saving class as a high school level enrichment class for the past two years. As its conclusion students receive certificates in lifeguarding/waterfront/first aid and CPR/AED.*

3. Food Service Enrichment Program

- *NCS partnered with Rogers to design and implement a food service program so students would develop skill set needed to obtain employment within the restaurant field.*

Opportunities available during summer programming through The Newport Area and Career Technical Center

The 2010 Summer Workforce Experience Program was a six week program for 45 students who experienced four different lab experiences in culinary arts, residential construction, automotive technology and cosmetology. In addition to the lab classes, students received support in literacy and numeracy, career counseling, and work readiness skills.

Materials to fully implement the lab experience were purchased to ensure students produced a product, for an outcomes based program. Students set goals, produced resumes, participated in work readiness pre and post testing, participated in mock interviews and maintained portfolios.



Newport Public Schools

Educational Success – Priority 7

Increase collaboration efforts between the district and community based organizations (CBOs) by providing professional development to align the district's standards-based curriculum to the CBO afterschool programs, e.g., Newport Family –COZ, The Newport Community School, Boys and Girls Club, Martin Luther King Center, etc.

Newport Public Schools is implementing a professional development plan with CBOs to impact student achievement.

Newport Public Schools

It is recognized in this community and supported by the research that our students, who spend hours a day in afterschool and summer programs, could be additionally assisted by CBO staff trained by NPS staff on our curriculum and instruction. These programs are willing and eager to collaborate with us in developing model extended learning time programs that align and support our curriculum. The goal is not to replicate the instruction but understand how to support it, in fun and non-traditional ways.

Newport Public Schools

Professional Development Plan

Two committees formed through School Community Organize for Results/ Educational Success (SCORES), a United Way systems change grant, developed PD plans in collaboration with CBOs.

- *Pre-School – addressing SCORES goal of school readiness*
- *Extended Learning Time – addressing this Educational Success goal and the SCORES goals of school/community collaboration and improved literacy and math scores.*

Newport Public Schools

Pre-School Committee:

Approaches to Learning PD series

- *Winter PD series: 45 participants from 11 organizations in a three day series on this portion of the Rhode Island Early Learning Standards.*

Social & Emotional Development PD series

- *Spring PD series: 60 participants from 14 organizations in a three day series on supportive classrooms, learning through play and home carryover.*

Newport Public Schools

Extended Learning Time Committee:

WOW Science Kit PD series

- 15 participants from 5 organizations looked at ways to incorporate science materials organized by district teachers and purchased through the SCORES grant.

Science NECAP PD

- On June, 8th grade teachers will administer the inquiry task from this May's science NECAP and then strategize how the CBOs can assist in developing similar tasks or building inquiry skills during after school or summer programming.

Math/Literacy

- CBOs will be given a list of math websites/materials and they will receive \$600 per organization through the SCORES grant to purchase math/literacy materials approved through the Extended Learning Time Committee.

Child Well Being

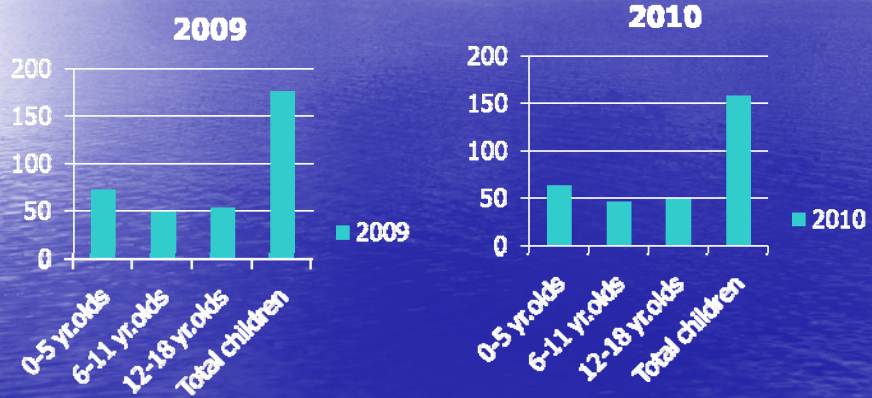
Outcome: Every child comes to school ready and prepared to learn

Newport Partnership For
Families

April 2011

Increase the Number of Children with Health Insurance

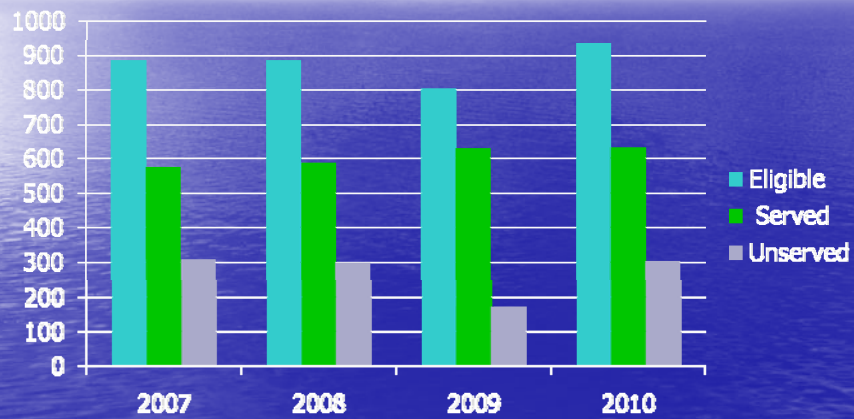
Enrolled in Health Insurance for 2009 & 2010



Data Source: Newport Health Advocate

Increase the number of eligible women, infants and children to receive WIC

Children and Families served by WIC



Data Source: Local WIC Office

Increase the number of individuals participating in parenting programs aimed at getting children ready for school

MISSION STATEMENT



Baby Steps is committed to raising the literacy and social skills of “needy” children age 0 to 3 and to fostering parental involvement through interactive programs between parents and children so that the children will eventually graduate from college.



WHO are WE?



Social service agencies directors

Educators: superintendent, retired Teachers

Public members

Medical Professionals

WHY ? (1)



1. Low NECAP scores at third grade

DISTRICT	2008		2009		2010	
	READING	MATH	READING	MATH	READING	MATH
ALL	60	53	64	50	63	50
LATINOS	40	40	64	30	43	33
BLACK	55	40	45	57	46	31
WHITE	71	63	74	60	85	78
POOR	50	43	52	35	52	36
NON-POOR	80	71	83	71	91	83

WHY ?(2)



2. Research showing that at age 3, kids from poverty have
 - Half the vocabulary compared to middle class peers.
 - Their vocabulary is mostly negative
 - Lack social skills to sit still, etc

TARGET POPULATION



Families with kids between 0 and 3 years and

low income families from

- Newport Heights
- Park Holm
- Chapel Terrace
- Rolling Green
- Bayside
- Festival Field

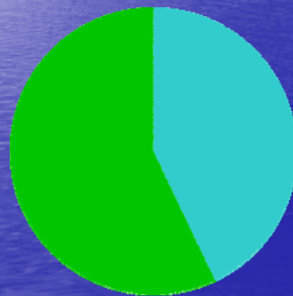
WHAT DO WE DO?



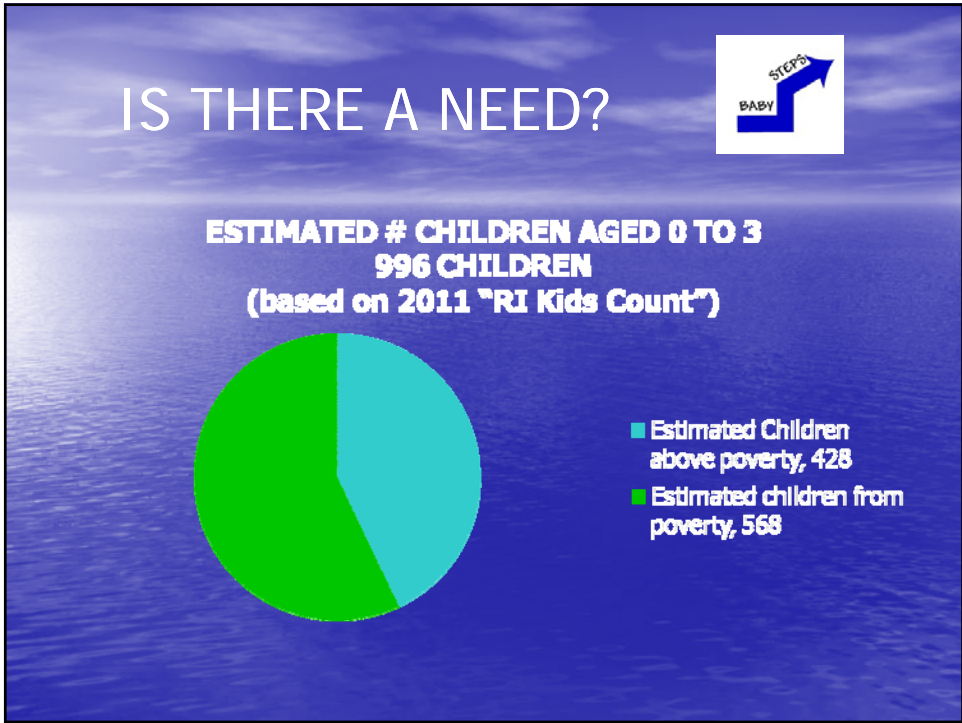
IS THERE A NEED?

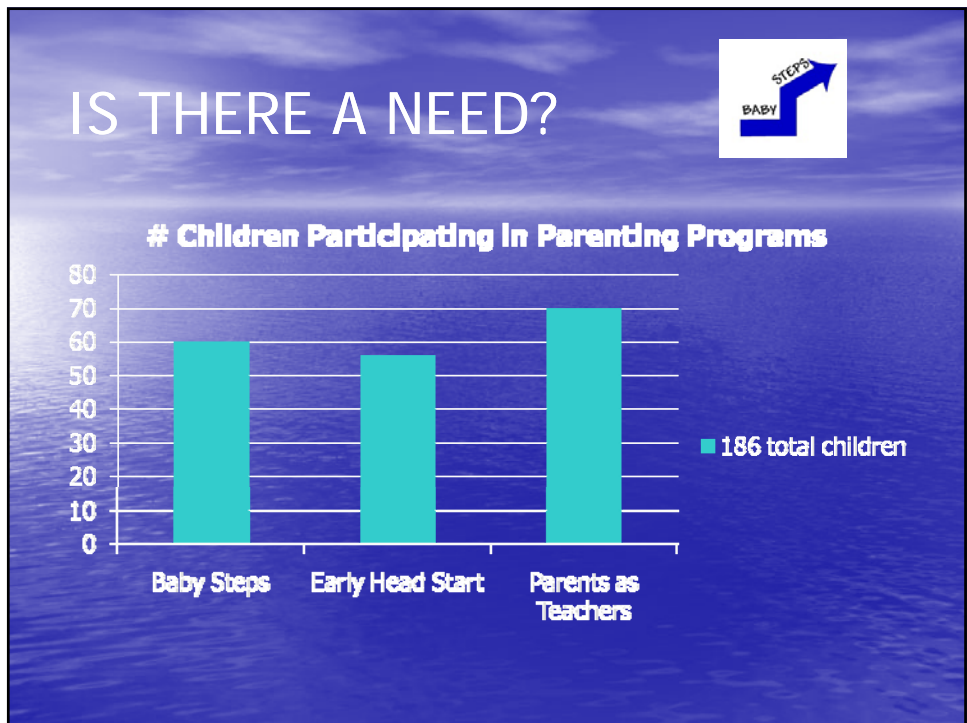


**ESTIMATED # CHILDREN AGED 0 TO 3
996 CHILDREN
(based on 2011 "RI Kids Count")**



- Estimated Children above poverty, 428
- Estimated children from poverty, 568



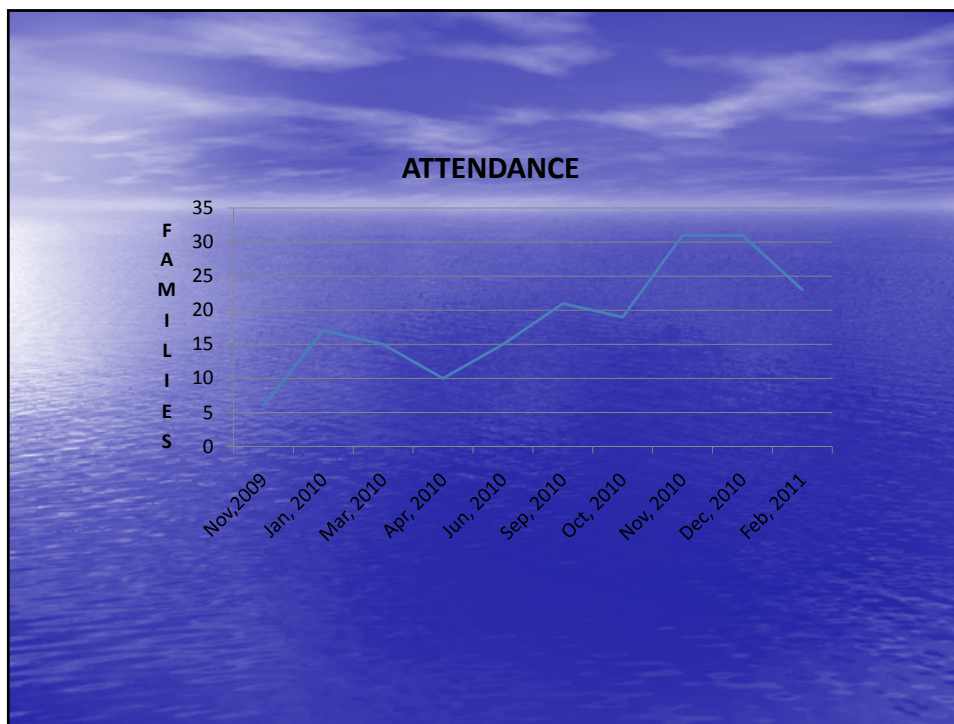












COLLABORATIONS



Parents as Teacher: curriculum development	Visiting Nurse Service, outreach program
Child and Family Services: co-hosted 2 Saturday programs	Newport Public Schools, music directors
Boys and Girls club transport families from Newport Heights	Newport Public Library, Paula Dugan as reading director
Head Start—books and rugs	Early Intervention, teacher and use of facilities
Even Start—Marisa Ellin	EBCAP interim fiscal intermediary
SCORES	Maher Center, teacher
Newport Housing Authority, use of Florence Gray Center and staff support	City of Newport, use of Easton Beach

FUTURE??



1. Complete our own curriculum
2. Evaluation
 1. Kids: Ultimate evaluation will be to compare the literacy and social skills of the Baby Steps' graduates at age 3 and 5 to control groups.
 - Testing done by Newport Public Schools
 - Establish control groups:
 - Kids without any early intervention
 - Kids from middle class families
 - Kids, who have participated in Parents as Teachers, etc.
 2. Parents:
 - Attendance data
 - Surveys, which we started last fall.

CURRENT STATUS



Consortium of over 50 volunteers, who have been active as "educators" and have witnessed the progress we have made in educating both the parents and the children.

We are in the process of developing our own curriculum. Although short on money, we are beginning to receive support from foundations.

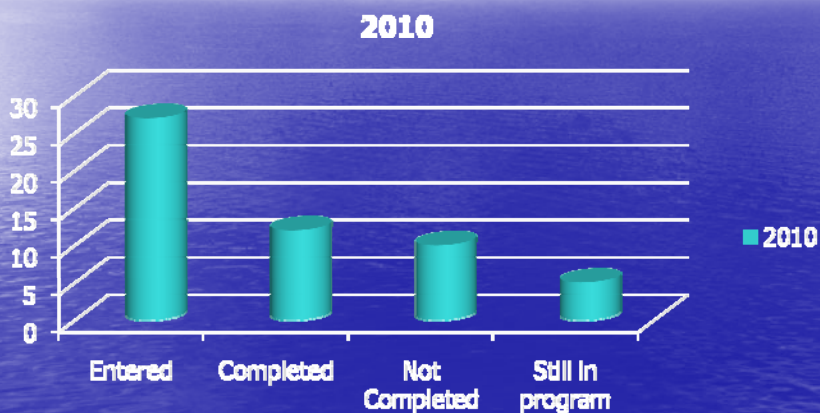
We appreciate all the help and encouragement we have received from the local communities.



Increase parent knowledge of
the child's emotional and
social development

New Benchmark

Early Childhood Day Treatment Program Statistics



Data Source: Program Goal for 2011 to increase participation in the program by 50%

Strong Families

Outcome: Newport children live in families that are self-sufficient yet inter-dependent and have access to community supports that promote positive behavior

Newport Partnership For Families

April 2011

Strong Families

New Benchmark for 2011 :

"Increase the number of elders connected to services that promote Aging in Place in Newport"

Starting in 2011 data will be collected to measure progress toward the goal:

"The City of Newport will be a model community that supports aging in place with coordinated, cost effective and excellent client centered services for elders and their families."

Strong Families

"Aging in Place: Coordinating Community Based Healthcare for Seniors in Newport."

Project Partners:

Visiting Nurse Services of Newport and Bristol Counties

Newport Partnership for Families

Child and Family

Newport Chamber of Commerce

Newport Housing Authority

Edward King House

Funded by a Common Ground Grant from the Newport County Fund

Strong Families: Aging in Place in Newport

Need In Newport

Town	Population	Residents Over 65	Median Household Income	Poverty Rate	Households with Elders Living Alone
Newport	26,899	12.9%	\$35,669	16.7%	10.9%
Jamestown	5,622	14.7%	\$63,073	2.9%	9.9%
Middletown	17,334	4.7%	\$51,075	4.9%	10.9%
Portsmouth	17,149	13.5%	\$58,835	3.4%	10.0%

Data Sources: US Census data

Strong Families: Aging in Place in Newport

- **Objective 1.**

Conduct a comprehensive community needs assessment in the City of Newport.

- **Measurable Outcome:** A Full Report and Executive Summary: "Aging in Place: Coordinating Community Based Healthcare for Seniors in Newport" will be the final product produced by the community needs assessment.

Strong Families Aging in Place in Newport

- **Objective 2.**

Connect more seniors to primary and specialty care by identifying and expanding best practices in public health screening, disease management, and coordination of care.

- **Measurable Outcome:** Installation and operation of Telehealth wellness program at Edward King House.
- **Measurable Outcome:** A Community Map of Services for Elders will be included in the Report and Executive Summary: "Aging in Place: Coordinating Community Based Healthcare for Seniors in Newport." The map will be a first step to evaluating community programs that serve elders, identifying best practices and collaborating to support access, effectiveness, and sustainability.

Strong Families: Addressing Food Insecurity

- Increase the percentage eligible children who access healthy free or reduced lunch

School Year	Free Lunches	Reduced Lunch	% of Total Lunches Free/Reduced
2008-2009	145,704	17,281	68%
2009-2010	159,275	13,602	70%

Strong Families: Addressing Food Insecurity

- Increase low income families access to food services

Year	Visits to Food Pantry	Visits to Meal Sites	% Eligible accessing WIC
2009	6160	23,339	79%
2010	7360	23,445	68%

Strong Families: Addressing Food Insecurity

Healthy Kids, Hunger Free Act

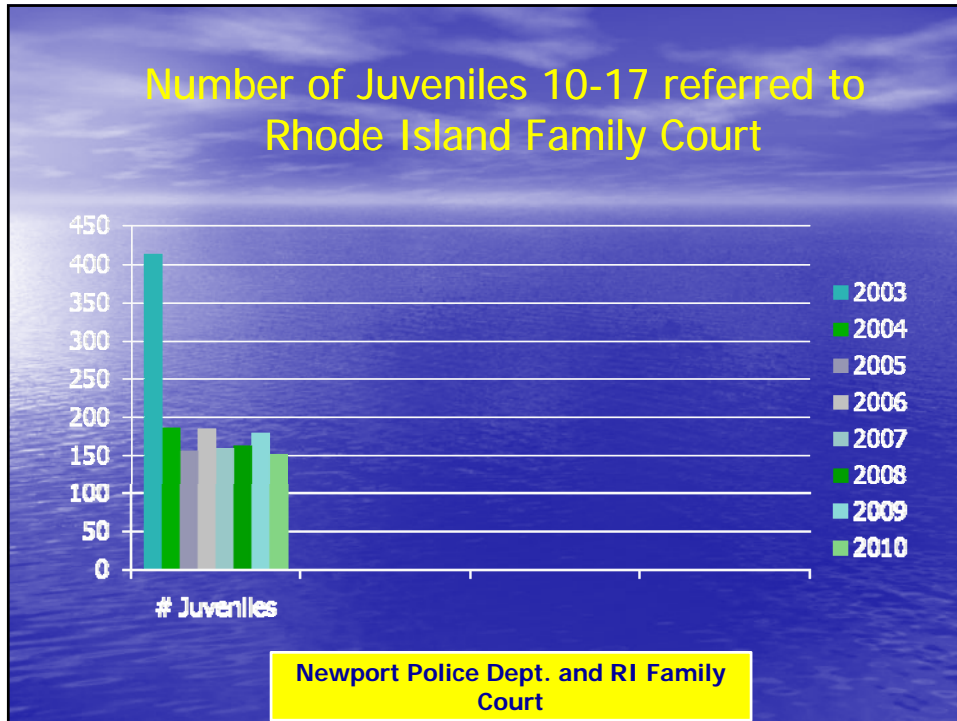
- **WHAT IS THE CHILD NUTRITION REAUTHORIZATION BILL?**
- **WHAT DOES IT DO?**
 - Improves Nutrition and Focuses on Reducing Childhood Obesity
 - Increases Access
 - Increases Program Monitoring and Integrity

Community Safety

Outcome: All Newport children, youth and families are safe in their homes, neighborhoods and schools

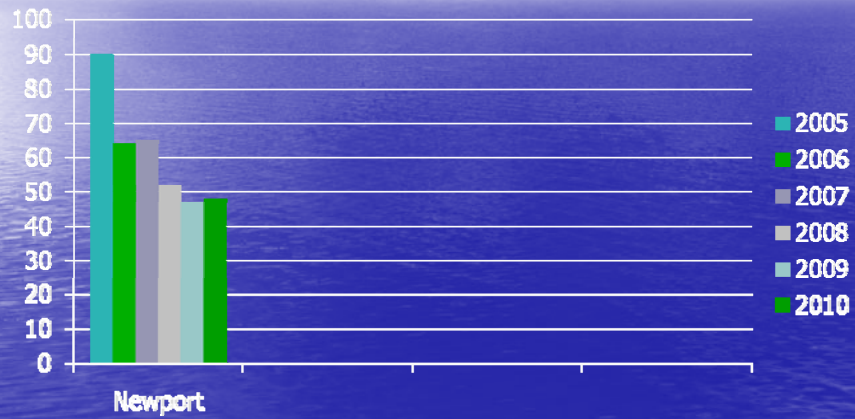
Newport Partnership for Families
April 2011

Decrease the number of minor youth 10-17 referred to Rhode Island Family Court



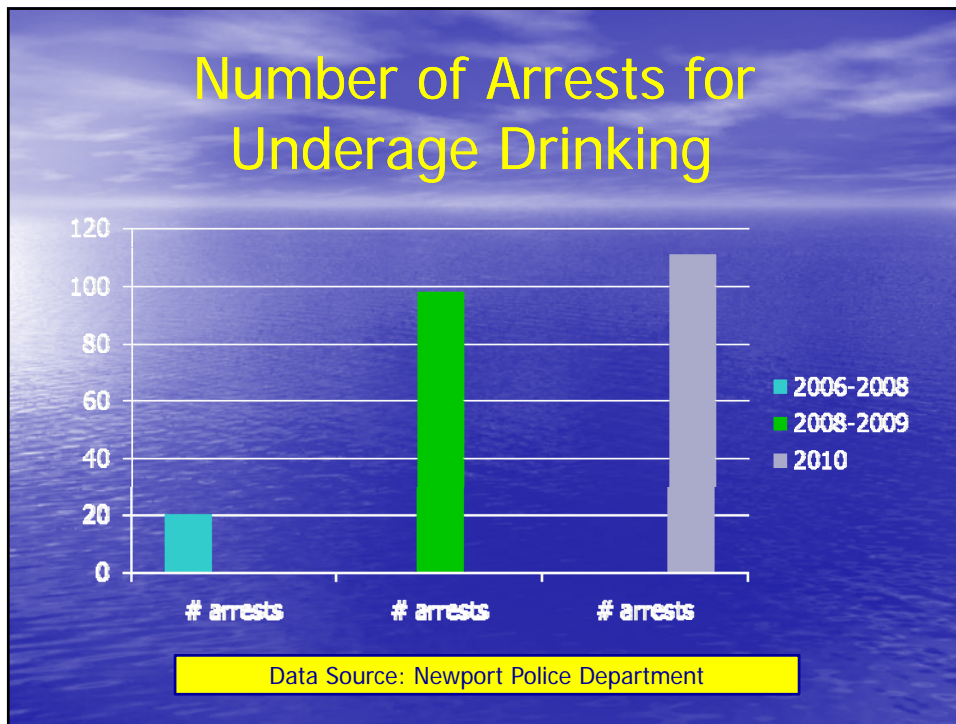
Decrease the number of minor youths arrested for Violent Crimes

Number of minor youth 10-17 arrested for violent crimes



Data Source: Newport Police Department

Increase the number of arrests for Underage Drinking



Increase the number of juveniles referred to the Juvenile Hearing Board


Newport Juvenile Hearing
Board Cases

Data Source: Newport Police Department

2000	54
2001	52
2002	31
2003	18
2004	23
2005	23
2006	18
2007	28
2008	28
2009	34
2010	23
Total 2000-2010	332



New Benchmark

Decrease the number of bullying incidences among elementary, middle, and high school students




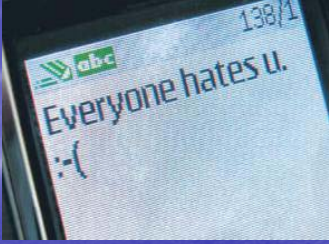
CYBER BULLYING / BULLYING

Officer Jonathan Cortes
Newport Police Department
Community Policing / D.A.R.E. Officer




Bullying

- *"A person is bullied when he or she is exposed, **repeatedly and over time**, to negative actions on the part of one or more other persons, and he or she has difficulty defending himself or herself."*
- It involves an imbalance of power or strength & involves unwanted, negative actions

Cyber Bullying

the harassment of one minor, to another, through the forms of text messages, social networks, and other interactive and digital technologies by pattern of conduct composed of a *series of acts over a period of time*

SEXTING

Sexting" is a relatively new term used for the act of sending a sexually suggestive or explicit text message (AKA texting, SMS, MMS) to someone else. In most instances, the intended recipient is a current or prospective boyfriend or girlfriend. These messages may vary from simple text, to photos, or even short videos sent from a mobile phone to either another phone and/or email account

High Profile Tragic Incidents

- Phoebe Prince's lilting Irish accent and wide smile made the 15-year-old freshman stand out at South Hadley High School. The bullying included disagreements over teen romances at school, school officials said. And it continued with taunting text messages and harassing postings on Facebook, the popular social networking site "Apparently the young woman had been subjected to taunting from her classmates, mostly through the Facebook and text messages, but also in person on at least a couple of occasions" . Phoebe Prince committed suicide Jan 14, 2010 by hanging herself.

High Profile Tragic Incidents

- Hope Witsell was 13 years of age when she sent a topless picture of herself to a boy she liked. The image quickly found its way onto the phones of other students. Her journals indicated the vicious name-calling (e.g., "slut," "whore") she endured for weeks before it became too much for her to handle. She ended her life two weeks into her eighth grade year.

What have we done?

- Beginning Sept 2011, every 5th grade class at Thompson has attended a individual seminar / lecture on BULLYING, the definition, what it entails, Newport School Dept Policy, and possible disciplinary action, given by Officer Cortes.
- Grade Level Seminars in Thompson by Lt. John Reise (Ret) on Bullying, expert and founder of P.A.V.E. Partnership to Address Violence through Education. This also included a teacher and administrator only seminar.

THE NEWPORT SCORES PLAN

Schools **C**ommunity
O rganize for **R**esults/
E ducational **S**uccess



The Newport SCORES Plan

United Way
of Rhode Island



The Newport SCORES Initiative, a United Way of Rhode Island 2008 – 2010 Solutions for Children, Youth and Families Grant Recipient, is a collaboration of the Newport Public Schools, in partnership with the East Bay Community Action Program and the Newport Partnership for Families.

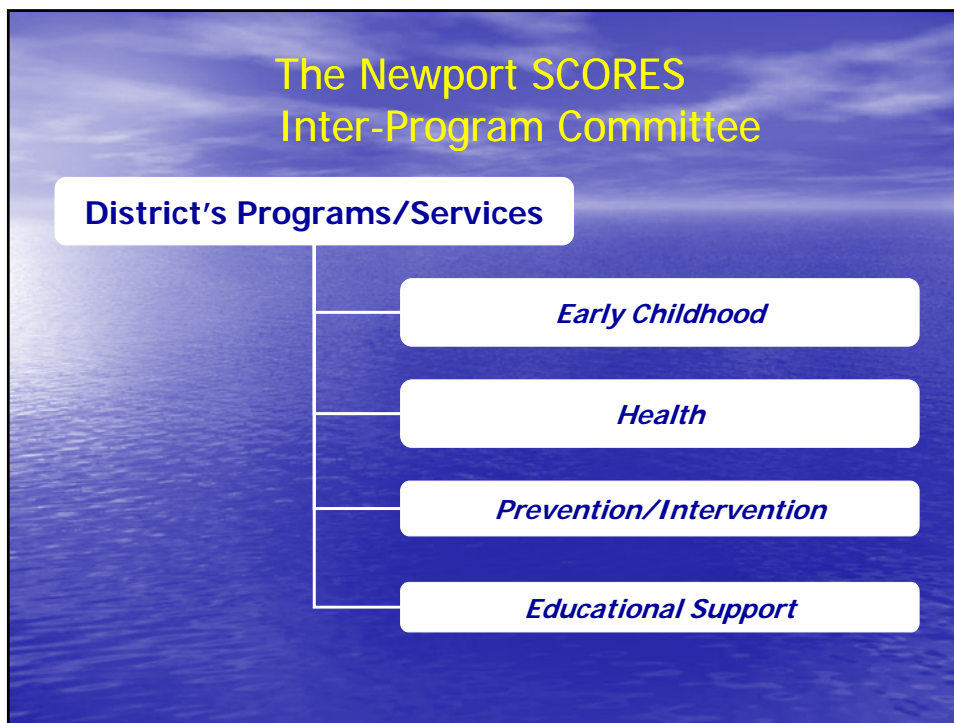
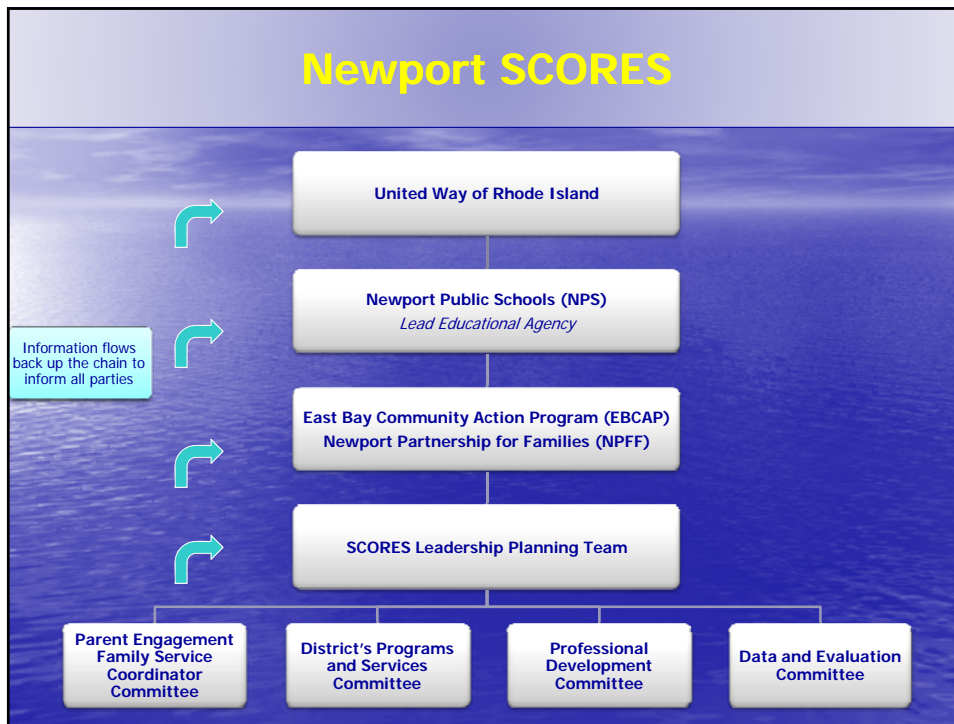
The Newport SCORES Initiative

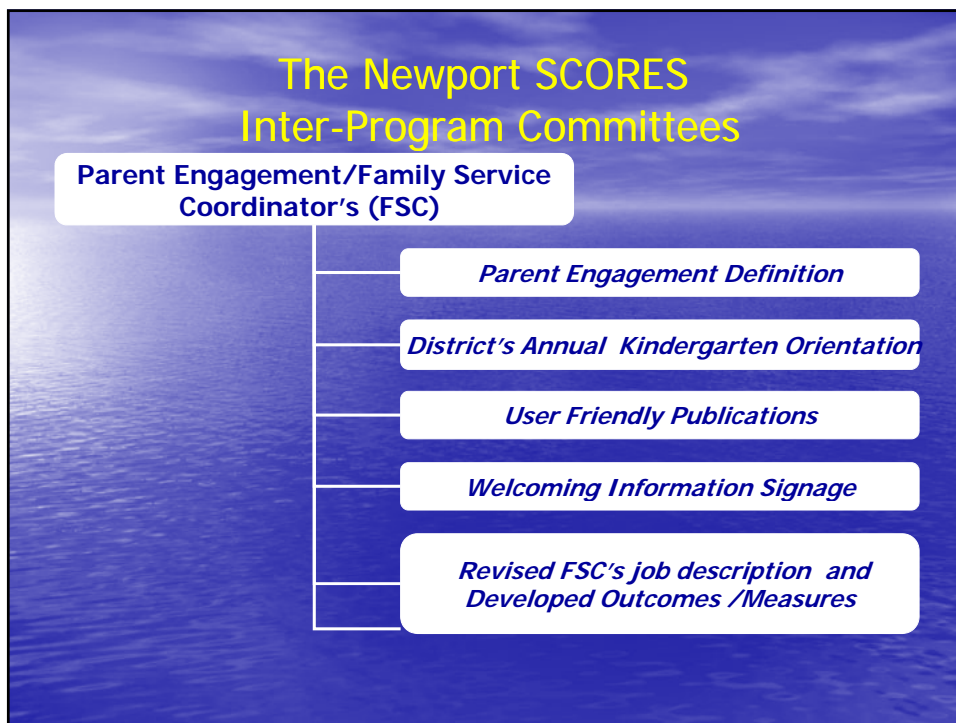
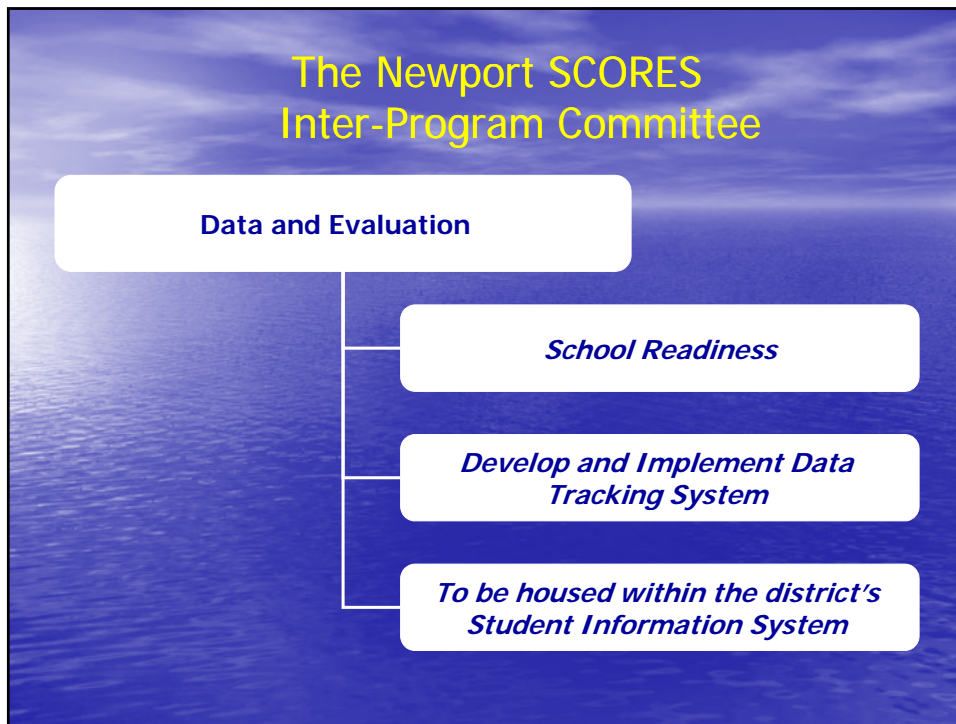
PROMOTING

“SYSTEMS CHANGE”



“IMPROVING THE LIKELIHOOD OF SCHOOL SUCCESS”





The Newport SCORES Inter-Program Committee

Professional Development (PD)

Developed PD plan Pre-School

*Developed PD Plan
Expanded Learning Time*

*Great collaboration & Mutual Respect
For each other's backgrounds and talent*

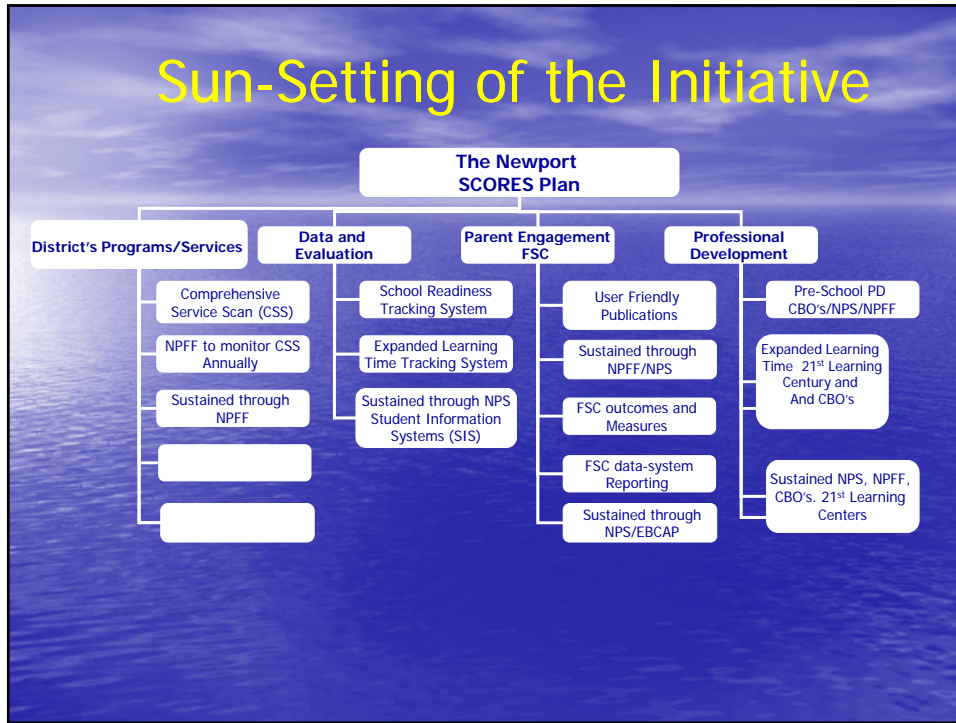
The Newport SCORES Plan

United Way
of Rhode Island



Newport SCORES
Sun-Setting of the
Grant

January 1, 2011 – June 30, 2011



MANY THANKS TO ALL LEADERSHIP AND INTER-PROGRAM COMMITTEE MEMBERS FOR THEIR COMMITMENT TO THE NEWPORT SCORES INITIATIVE

A list of committee members are outlined in the NPFF annual breakfast pamphlet.

Special Thanks to our Leader, John H. Ambrogi, Ed.D. , NPS Superintendent and Co-Chairpersons Inter-Program Committees Amy Donnelly Roche, NPS, Jacqueline Naspo, Ed.D. ,NPS, and Jason Alexandre, C&F.

Sharon K. Carter, NPFF, Facilitator, Susan Schenck, EBCAP Co-Facilitator and Alyson Novick, Program Assistant.